


Eclipse ThermAir

Burners

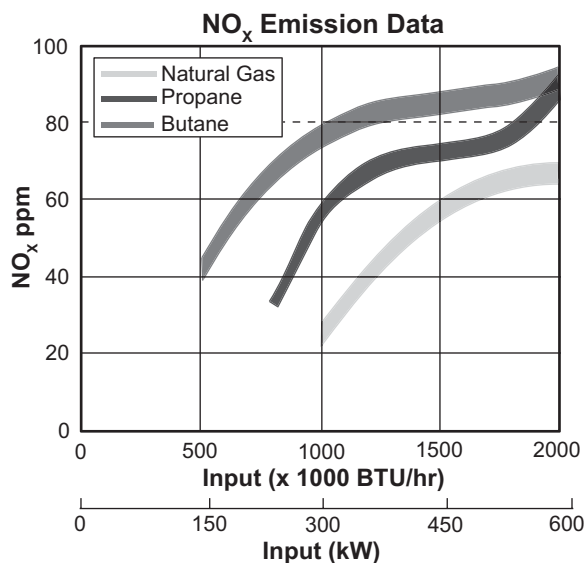
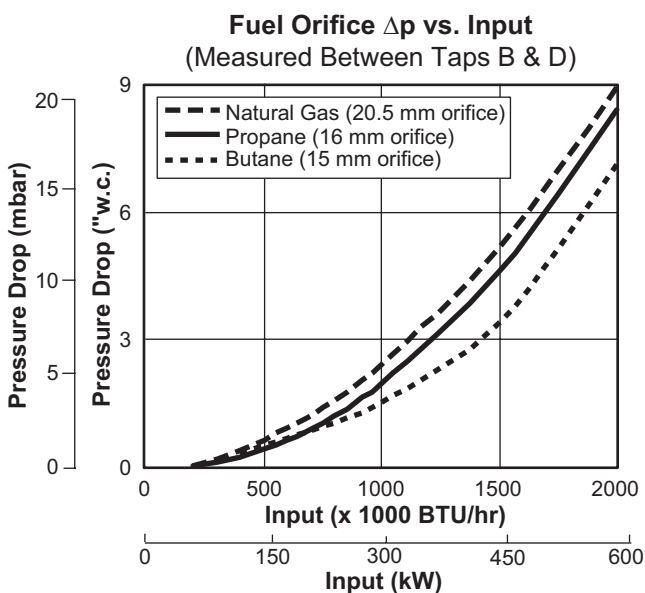
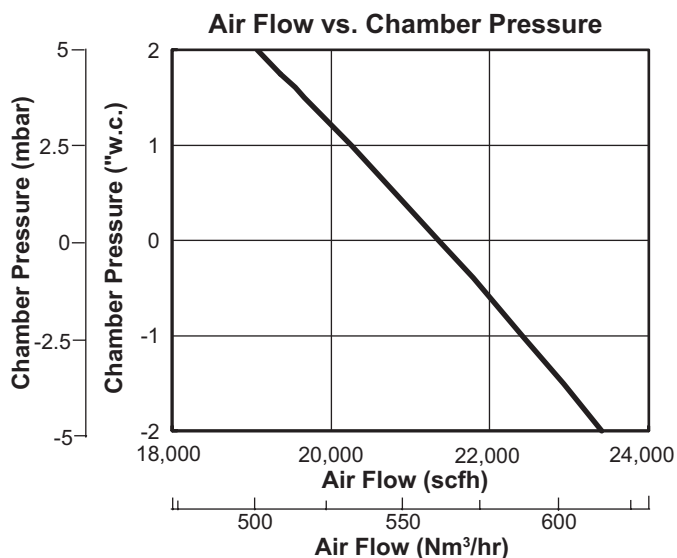
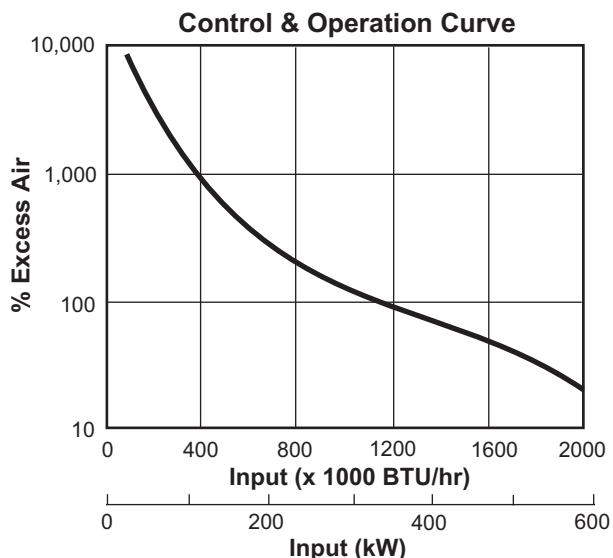
Model TA0200

Version 2

Parameter		Specification	
		Packaged Blower Size	
Maximum Input, BTU/hr (kW)^{1 2} <i>(To maintain 15% air with the standard air orifice and standard combustion air blower.)</i>	Chamber Pressure "w.c. (mbar)	60 Hz	50 Hz
	-1.0 (-2,5)	2,071,000 (607)	2,235,000 (655)
	0.0 (0,0)	2,000,000 (586)	2,066,000 (605)
	1.0 (2,5)	1,871,000 (548)	2,028,000 (594)
Minimum Input, BTU/hr (kW)		66,000 (19,4)	
Main Gas Inlet Pressure, "w.c. (mbar)³ <i>Fuel pressure in gas inlet (Tap B)</i>		9.8 (24)	
High Fire Flame Length, inches (mm) <i>Measured from outlet end of combustor</i>	Natural Gas, Propane	54 (1370)	
	Butane	53 (1345)	
Maximum Application Temperature, °F (°C) <i>Note: For higher temperatures contact Eclipse.</i>	Alloy Tube	1500 (820)	
	SiC Tube	1900 (1040)	
Flame Detection		UV Scanner	
Fuel⁴ <i>For any other mixed gases, contact Eclipse.</i>		Natural gas, propane, or butane	
Blower Motor Power		10" w.c. @ 22000 scfh, 1 hp	
Weight, lbs (kg)⁵	With Blower	168 (76)	
	Without Blower	89 (40)	
Approvals			

- Maximum inputs are given for the standard combustion air blower without an air filter.
- Blower motor service factors greater than 1.0 may be required when firing into negative chamber pressure applications. For specific application questions, contact Eclipse.
- For proper performance, this pressure must be kept constant across the burner operating range.
- See Design Guide 114 for more information about typical fuel composition and properties.
- All weights are approximate.
 - All information based on laboratory testing in neutral (0.0" w.c.) chamber with standard combustion design. Different chamber conditions and/or combustor design will affect the data.
 - All inputs are based upon gross calorific values and standard conditions: 1 atmosphere, 70°F (21°C).
 - Eclipse reserves the right to change the construction and/or configuration of our products at any time without being obliged to adjust earlier supplies accordingly.

Performance Graphs



NO_x emission data is given for:

- Ambient combustion air ~70°F (20°C)
- Minimal process air velocity
- ppm volume dry at 3% O₂
- Neutral chamber pressure

Emissions are influenced by:

- Chamber conditions
- Fuel type
- Firing rate
- Ratio regulator adjustment
- Combustion air temperature

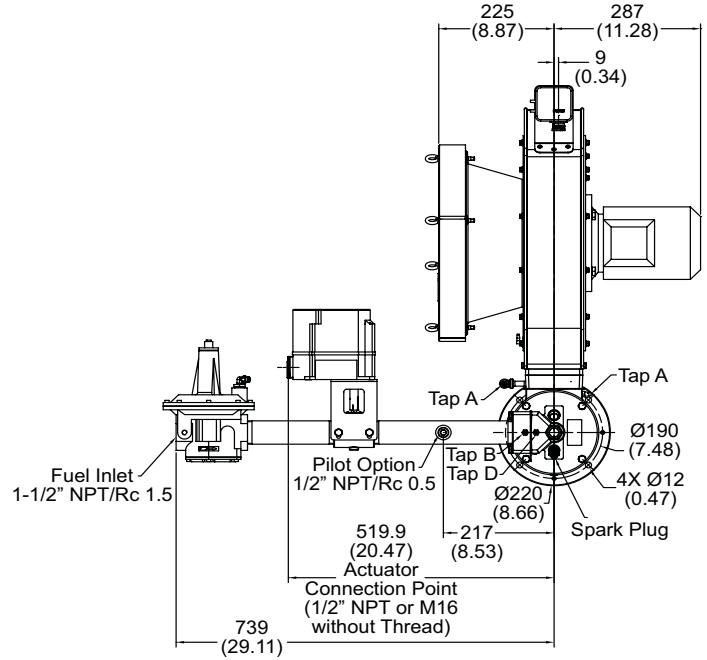
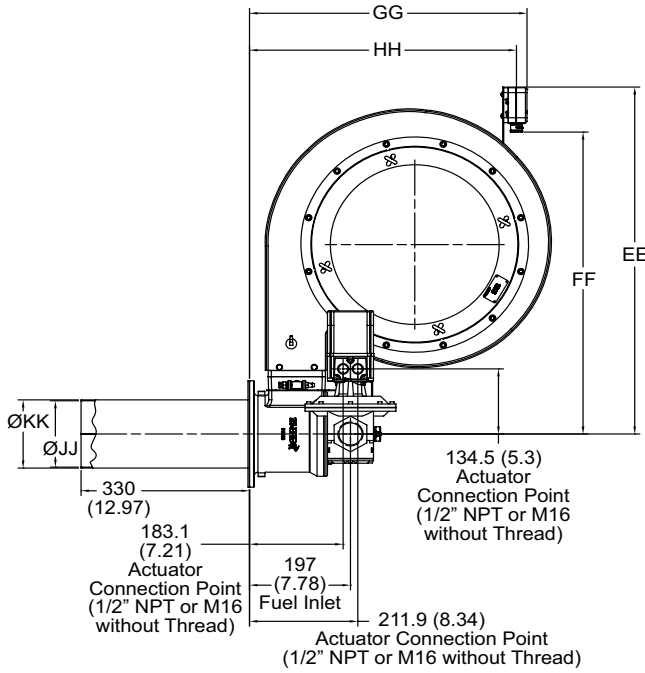
CO emission is largely influenced by chamber conditions. Contact your local Eclipse representative for an estimate of CO emission on your application.

Dimensions mm (inches)

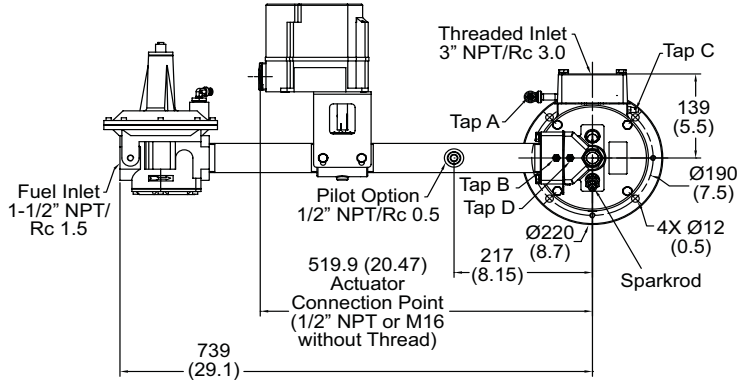
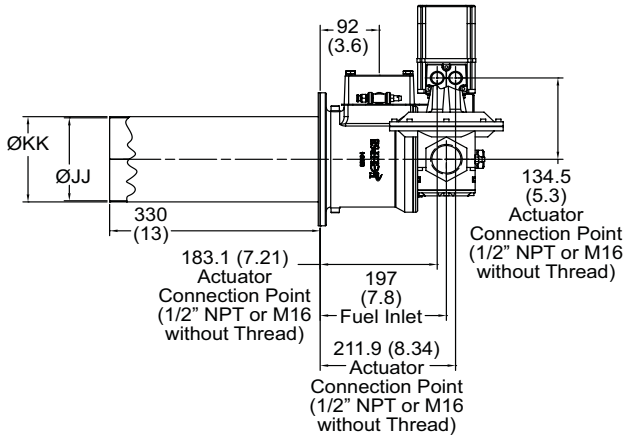
Blower	EE	FF	GG	HH
60 Hz (6" wc)	639 (25.2)	546 (21.5)	479 (18.9)	453 (17.8)
50 Hz (6" wc)	716 (28.2)	623 (24.5)	543 (21.4)	522 (16.8)

Combustor Type	JJ	KK
Straight Alloy Tube	137.2 (5.4)	141 (5.55)
Straight Silicon Tube	136 (5.35)	147.8 (5.82)

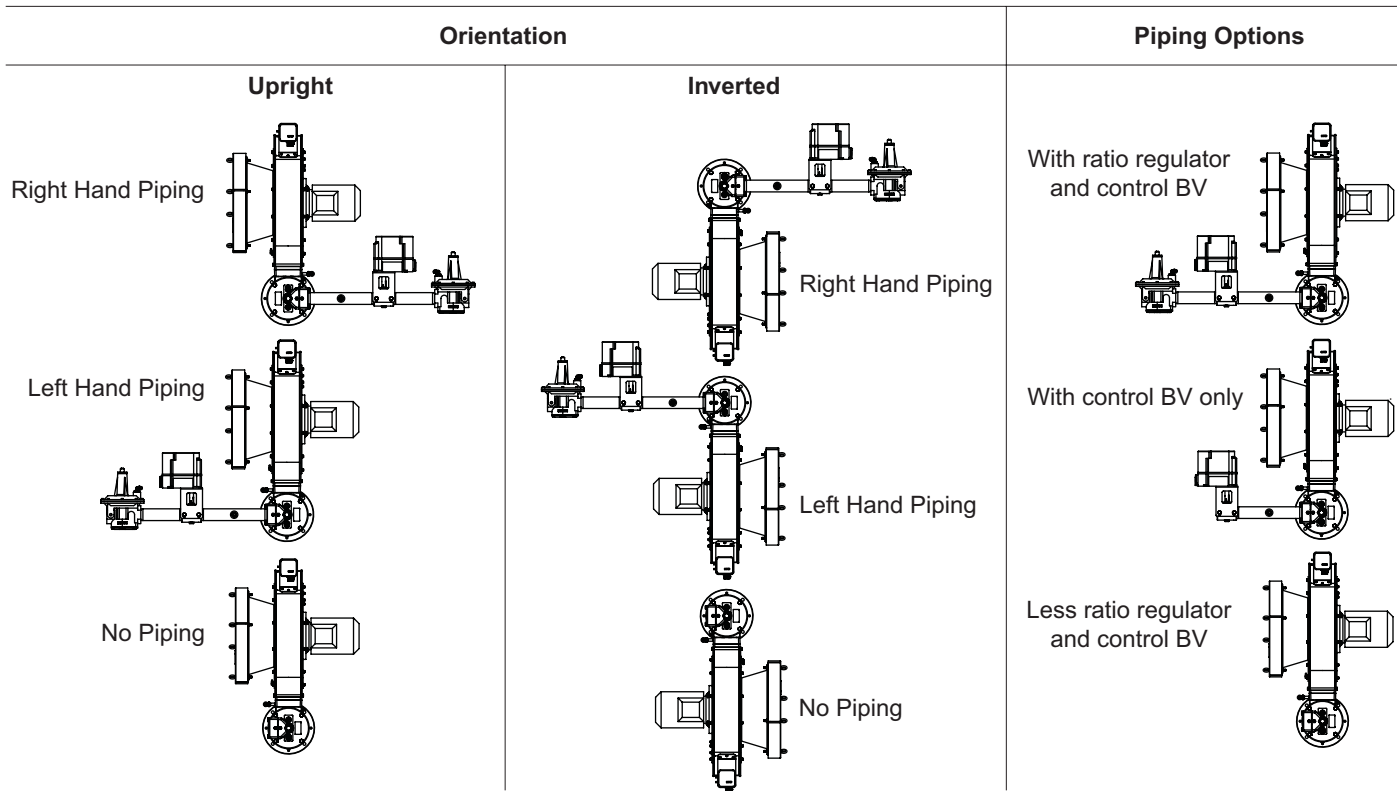
Packaged Blower



Remote Blower



Piping





Offered By:

Power Equipment Company
2011 Williamsburg Road
Richmond, Virginia 23231
Phone (804) 236-3800
Fax (804) 236-3882

www.peconet.com